



UCR SCHOOL OF MEDICINE

**CENTER FOR  
HEALTHY  
COMMUNITIES**

**IMPACT  
REPORT**

**2018-2019**

**UCR** | School of  
Medicine  
Center for Healthy Communities



# DEPUTY DIRECTOR'S MESSAGE



It is a privilege to serve as the deputy director for the University of California, Riverside School of Medicine Center for Healthy Communities. When I'm out in the community, I'm often asked, "does the CHC provide any services, and if so, what?" My response is, "yes; we're here to serve the needs of the Inland Empire's culturally, linguistically, and economically diverse communities, especially those who are medically under-resourced."

We do this by facilitating conversations that help us understand what the pressing health needs are in our communities. We strengthen existing community partnerships and strive to build new collaborations that cultivate an environment of trust; and a sense of community. The purpose of the CHC is to bridge the gaps and improve the health outcomes in our communities.

We are embarking on the work of social transformation. I humbly invite you to join us in our efforts to make health a shared priority for the residents of the Inland Empire. Together, we can improve the health outcomes in our communities and be the model of success for other communities with demographic similarities.

It is with great excitement that I share our inaugural Impact Report with Inland Empire community stakeholders, university faculty and staff, students, our supporters, and our funders/sponsors. In this Impact Report, you will find our goals, our progress, and our calls to action.

Thank you for your interest in and commitment to the health of our cherished communities of the Inland Empire. I am looking forward to making positive, lasting change – together!

Sincerely,

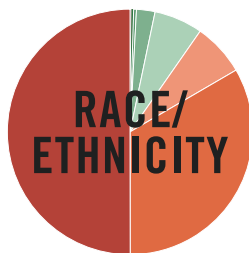
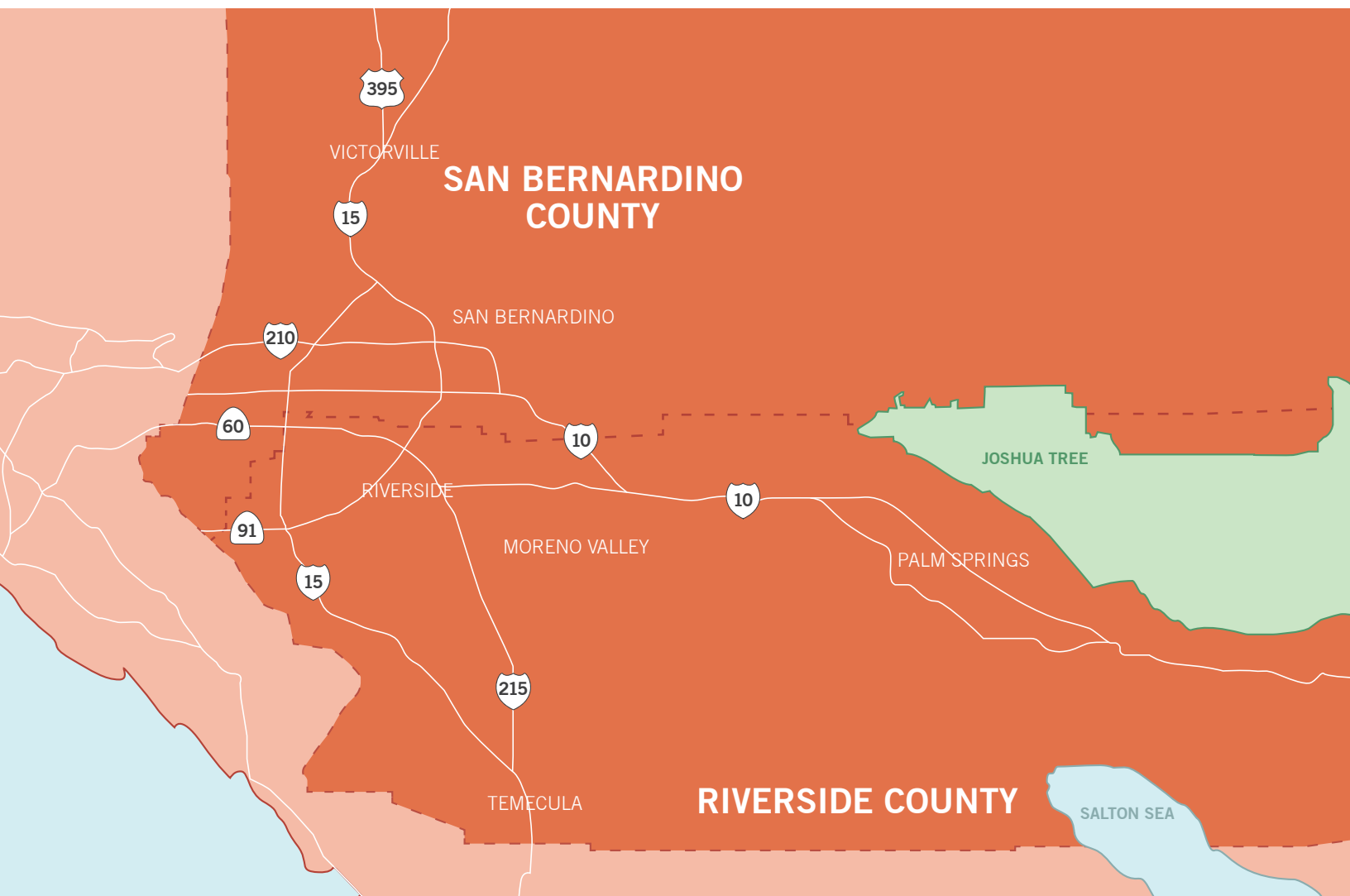
A handwritten signature in black ink, reading "Michelle C. Burroughs".

Michelle C. Burroughs, M.P.H.

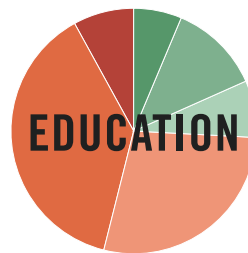
Deputy Director, Center for Healthy Communities (CHC)

Financial Administrative Officer, Social Medicine, Population and Public Health (SMPPH)

# THE COMMUNITY WE SERVE



- 50.02% Hispanic or Latino
- 33.37% White
- 6.92% Black or African American
- 6.40% Asian
- 2.44% Two or more races
- 0.37% American Indian & Alaska Native
- 0.27% Native Hawaiian & Other Pacific Islander
- 0.20% Other



- 5.95% No High School
- 28.32% Some High School
- 20.88% Some College
- 55.58% Associate Degree
- 8.93% Bachelor's Degree
- 4.71% Graduate Degree



- 59.38% Only English
- 33.54% Spanish
- 4.48% Asian or Pacific Island
- 1.78% Other Indo-European
- 0.82% Other languages



- 5.83% Less than \$10k
- 14.46% \$10k-24,999
- 22.39% \$25k-49,999
- 31.22% \$50k-99,999
- 21.35% \$100k-199,999
- 4.74% \$200k+

# OUR VISION

The UCR School of Medicine's Center for Healthy Communities will become a national leader in community-based, multi-disciplinary research that engages a broad range of community, academic, and health partners to improve health and promote health equity.

*Our goal is to build collaborations and partnerships between researchers and the Inland Empire communities through service, education and research that addresses our communities' needs and promotes health equity. Service, education and research all require **engagement**; all of us collectively being committed and motivated to contribute our time and talents to help our communities thrive.*

## COMMUNITY ENGAGEMENT

### SERVICE



### EDUCATION



### RESEARCH



***PROMOTING HEALTH EQUITY***



# SERVICE

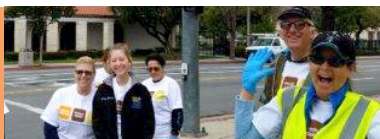
The CHC is imbedded in our diverse community. We're accessible and available to serve, to be a resource and to engage the residents of Inland Empire communities.

## FEATURED COMMUNITY ENGAGEMENT EVENTS

Below are a few community engagement events that CHC was invited to participate in.

### GREAT AMERICAN CLEANUP: KEEP RIVERSIDE CLEAN AND BEAUTIFUL

Riverside, CA



### UCR HEALTH 5K RUN/WALK

California Citrus State Historic Park, Riverside, CA



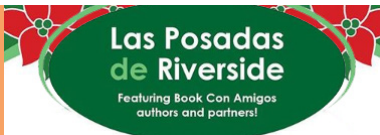
### FESTIVAL IN THE FIELDS

UCR Palm Desert Center, Palm Desert, CA



### LAS POSADAS DE RIVERSIDE

Arlanza Community Center, Riverside, CA



### STREET MEDICINE HYGIENE KIT DISTRIBUTION

Health to Hope Clinics, Riverside, CA



### YOUTH LEADERSHIP & UPLIFT CONFERENCE

J.W. North High School, Riverside, CA



### I.E. VOICE NEWSPAPER

theievoice.com

(See page 4)



## COMMUNITY ENGAGEMENT:

Community engagement is the process of working collaboratively with community groups to address issues that impact the well-being of those groups. Activities that help engage the community include credible and transparent reporting, community conversations, focus groups and collaborative decision making.

### DID YOU KNOW?



Over 400 care packages were provided to the homeless and unsheltered population throughout Riverside.

SEE OUR COMMUNITY ENGAGEMENT GOAL ON PAGE 9

## COMMUNITY HEALTH NEWS BY CHC

CHC is a proud contributor of public health articles to the IE Voice, a weekly newspaper on [theievoice.com](http://theievoice.com).

To see all full articles by CHC, visit the **Community Health News** section of [healthycommunities.ucr.edu](http://healthycommunities.ucr.edu)

# COMMUNITY HEALTH NEWS

**To Speak or Not To Speak – Understanding Why People Stutter**

~~~~~  
~~~~~  
~~~~~

**VACCINES – Misconceptions and Facts**

~~~~~  
~~~~~  
~~~~~

**PUBLIC POLICY NEEDS THE PUBLIC**

~~~~~  
~~~~~  
~~~~~

**Living with AIDS in the IE**

~~~~~  
~~~~~  
~~~~~

**Living with HIV**

~~~~~  
~~~~~  
~~~~~

**IT'S ALL IN MY HEAD**

~~~~~  
~~~~~  
~~~~~

**My Blood – Is it a Blessing or a Curse?**

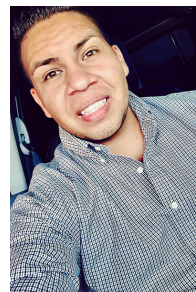
~~~~~  
~~~~~  
~~~~~

**It Was All in the Fine Print**

~~~~~  
~~~~~  
~~~~~

**Men... Can We Talk?**

~~~~~  
~~~~~  
~~~~~



“Working with CHC aligns perfectly with our goals and objectives at Voice Media Ventures to provide opportunities for young people to develop their writing skills while also working to inform the community of vital news and information. Public health is an important issue for all communities and especially for low income and minority citizens who represent many of our readers. Partnering with CHC enhances our ability to bring readers relevant health information often as told through the experiences of their neighbors here in the inland region and coupled with the expertise of healthcare professionals at UCR. We are pleased to have an opportunity to work with UCR SOM'S CHC.”



- Stephanie Williams  
Editor/Writer of Voice Media Ventures

**SERVICE YOUR  
COMMUNITY AND  
CREATE CHANGE**

Contact CHC at  
[chc@medsch.ucr.edu](mailto:chc@medsch.ucr.edu)



# EDUCATION

CHC faculty and staff offer comprehensive training to enhance the communities' knowledge of social determinants of health, public health and health equity. Our objective is to equip community members with the skills to effectively lead and facilitate real transformation.

Below are examples of community training opportunities available to anyone in the community. The training sessions are led by our faculty members pictured below.

## CAPACITY BUILDING:

Develop medical students, researchers, health coaches, and community liaisons “promotoras” as engaged learners, by fostering community-based opportunities that deepen their sense of health equity and concern for the common good.



**Brandon Brown, M.P.H., Ph.D.**  
Associate Professor



**Ann M. Cheney, Ph.D.**  
Assistant Professor



**Sunny Nakae, M.S.W., Ph.D.**  
Associate Professor

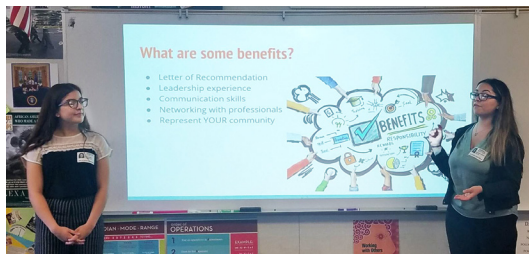


**Andrew Subica, Ph.D.**  
Assistant Professor



SEE OUR CAPACITY BUILDING GOAL ON PAGE 9





# LEARN HOW TO BE A COMMUNITY ADVOCATE

Contact CHC at  
chc@medsch.ucr.edu



# RESEARCH

The Center for Healthy Communities prides itself in its ability to form partnerships with other schools, faith communities, community-based organizations, community advocates, healthcare providers, community engaged researchers and other stakeholder groups when conducting research.

Through partnerships, the CHC is able to design research for easy translation to real-world health settings and situations. As a result, the CHC is able to improve cultural- and language-appropriate interventions that create better services for underrepresented and underserved populations.

## AIR QUALITY PROJECT

### PROBLEM:

An increased number of heavy-duty diesel truck toxin emissions and their associated health impacts on Riverside community members.

### GOALS:

- Communicate the air quality and health concerns unique to Riverside.
- Develop community emissions reduction action plan.

### MAIN FINDINGS:

- The majority of residents in the 92507 zip code consider air quality an important issue.
- Residents consider the lack of awareness and civic/community engagement as the main reason why there have not been improvements to the air quality in Riverside.

### OTHER IMPORTANT ISSUES IMPACTING THE HEALTH OF OUR COMMUNITY

ACCORDING TO 157 COMMUNITY MEMBERS SURVEYED:

Childhood obesity

Community safety

Healthcare access

### COMMUNITY ENGAGEMENT RESEARCH:

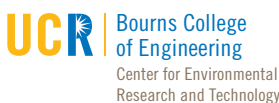
Engaging the community for the purposes of research.

### COMMUNITY-BASED PARTICIPATORY RESEARCH (CBPR):

A partnership approach to research that equitably involves community members, organizational representatives, researchers, and others in all aspects of the research process, with all partners contributing expertise and sharing in the decision-making.



### THIS PROJECT WAS DONE IN PARTNERSHIP WITH:



SEE OUR PARTNERSHIPS GOAL ON PAGE 9

## COMMUNITY PARTNERSHIP:

CHC's community partners (e.g. businesses, coalitions, educational institutions, health organizations, non-profits, faith organizations, state and local governments) are engaged and committed to community development and civic leadership.



John W. North students using low-cost portable monitoring devices to measure air quality in their community.

“Mientras estaba trabajando en este proyecto de investigación, aprendí sobre las necesidades y los obstáculos en la salud. Algunos obstáculos son: estatus legal, seguro médico y barreras del idioma. Descubrí la gran necesidad de que la comunidad esté informada de lo que está sucediendo. Por ejemplo, los nuevos servicios y beneficios que pueden obtener. Me encantó trabajar con la Dr. Cheney y aprendí el impacto que puede tener uno. Siempre tuve las herramientas en la mano, pero ella me enseñó a usarlas.”



“While working on this research project, I learned about the necessities and obstacles in health. Some obstacles being: legal status, medical insurance, and language barriers. I discovered much need for the community to be informed of what is happening. For example, the new services and benefits they can obtain. I loved working with Dr. Cheney and I learned how much of an impact one can make. I always had the tools in my hand but she taught me how to use them.”

- Conchita

**DISCOVER HOW  
TO PARTNER WITH  
US IN RESEARCH**

Contact CHC at  
[chc@medsch.ucr.edu](mailto:chc@medsch.ucr.edu)

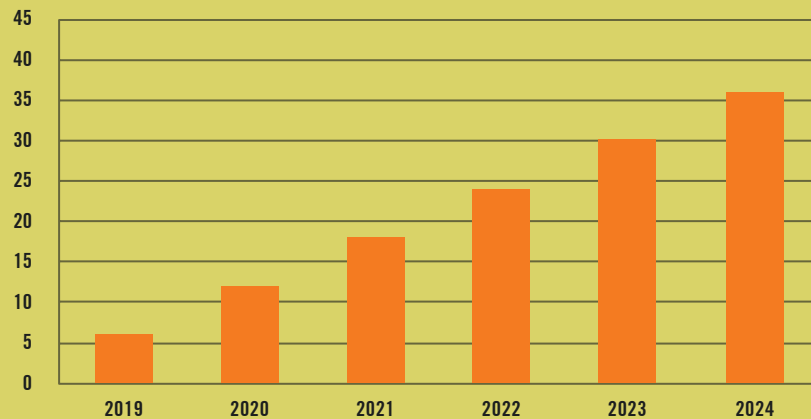


# GOALS

CHC HAS ESTABLISHED THE FOLLOWING GOALS IN ALL AREAS TO BE REACHED BY **JUNE 30, 2024**.

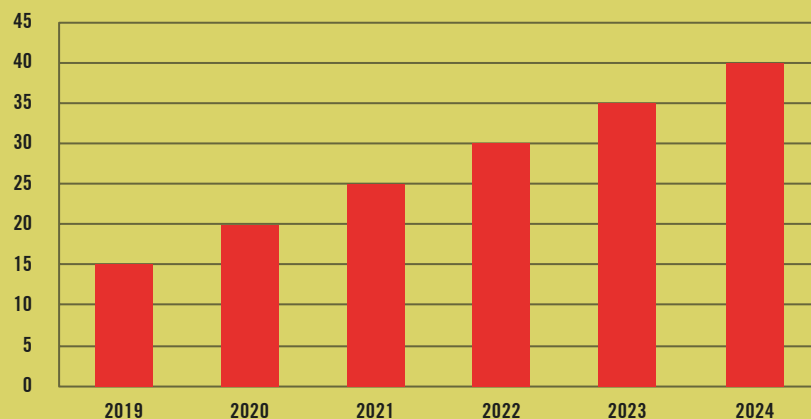
## COMMUNITY ENGAGEMENT GOAL

CHC will increase community engagement opportunities to build civic engagement in our local community by collaborating each year on six new events in the community.



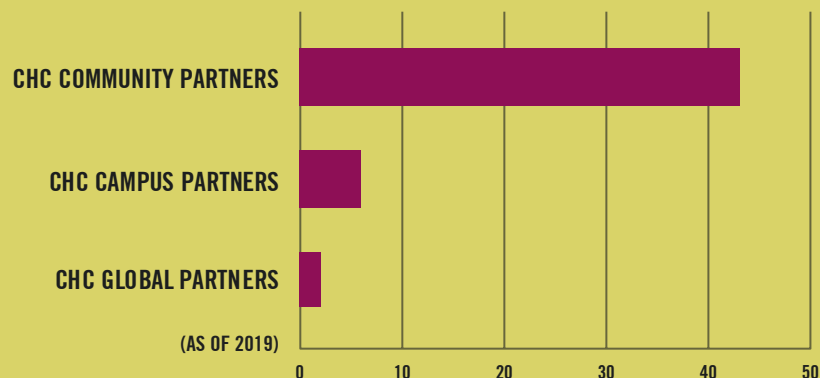
## CAPACITY BUILDING GOAL

CHC will increase its offerings of community-based participatory research trainings to a total of 40.



## PARTNERSHIPS GOAL

CHC will transition 50% of our community partners into community-based participatory research partnerships to increase community-engaged research in the Inland Empire.





***Thank you to our community, who has welcomed and partnered with CHC, and joined our calls to action for social transformation. Your support and dedication to improving the health outcomes of our communities, inspires hope and creates opportunities for a better tomorrow!***

***"The greatness of a community is most accurately measured by the compassionate actions of its members."  
- Coretta Scott King***

## OUR MISSION

The UCR School of Medicine's Center for Healthy Communities will lead and facilitate innovative research aimed at improving the health of culturally, linguistically, and economically diverse communities in the region, especially those who are medically under-resourced. Our goal is to build collaborations and partnerships between researchers and communities through education and research that addresses our communities' needs and promotes health equity.

## Center for Healthy Communities

3333 14th Street  
Riverside, CA 92501

(951) 715-2700

[chc@medsch.ucr.edu](mailto:chc@medsch.ucr.edu)  
[healthycommunities.ucr.edu](http://healthycommunities.ucr.edu)



  @CHC\_UCR ON TWITTER AND INSTAGRAM

  @UCRCENTERFORHEALTHYCOMMUNITIES ON FACEBOOK AND LINKEDIN